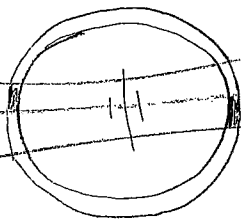


Hilary Jeffery

"MISSING, LAST SCENE ON THE SUSPENSION BRIDGE"  
for Violin, Double Bass and Voice



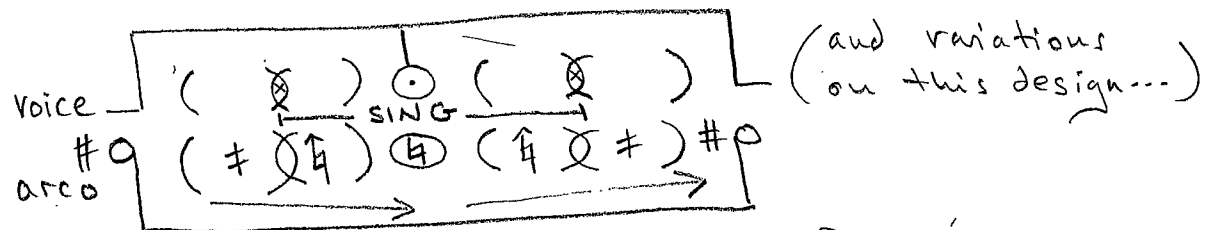
Composed for Mary Oliver and Rozemarie Heggen  
Commissioned by Oliver/Heggen and  
the Performing Arts Fund, Netherlands

this piece comprises of a set of "suspended dream scenes"

the music arising is fragile, quiet, static and without "development"  
15 pages with a text plus graphical and conventional notation are given  
a performance should start and end with the first page: "missing"  
in between this, the players have a free choice of which pages to play  
Some of the notation should be played precisely, as indicated  
other parts of the notation have more space for free interpretation

guide for the graphical notation:

○ = sing/hum - voice should be quite indistinct and blend with the bowed string sound, generally "singing" quietly with a half-open mouth - somewhere between humming and regular singing works best  
when amplification is available: close microphones can be used to amplify the voices - sending the signal through a very long reverb to create a "hovering choir" of voices (always p - mp in dynamics and never louder than the strings)



the string plays a slow glissando from a sharp (#) note to a natural (♮) note, moving carefully between the micro-intervals, the voice tries to find and sustain the in-between tone indicated ...

where no specific note is indicated - the choice is free for the player

accidentals notation:

# = sharp ; ♯ = flat sharp ; ♮ = sharp natural ; ♮ = natural  
b = flat ; ♮ = sharp flat ; ♮ = flat natural  
♯♯ = sharp sharp ; ♯♮ = sharp flat ; ♮♮ = flat flat etc ...

other notation is either conventionally written / played or otherwise open to free interpretation

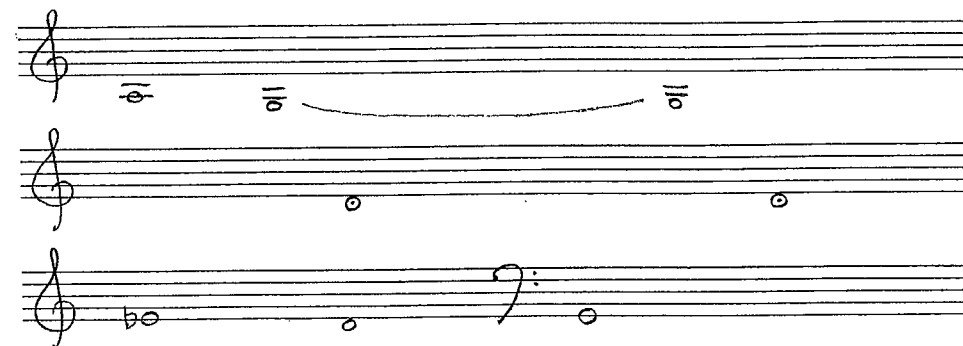
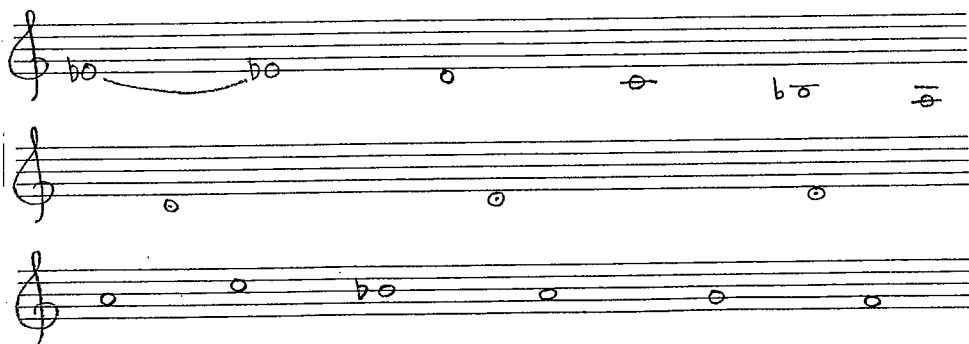
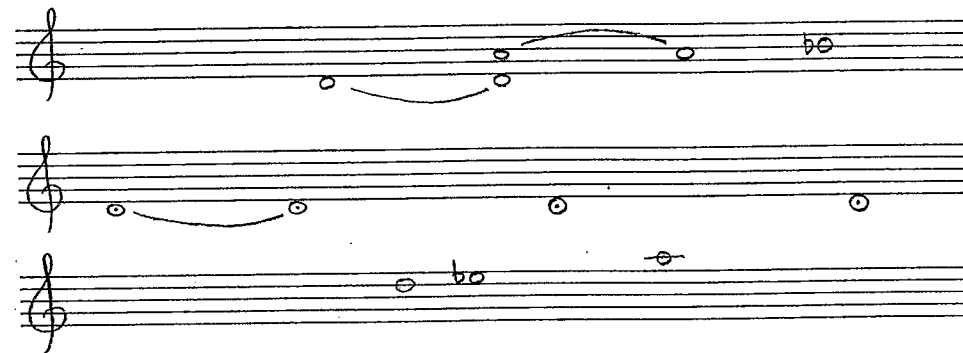
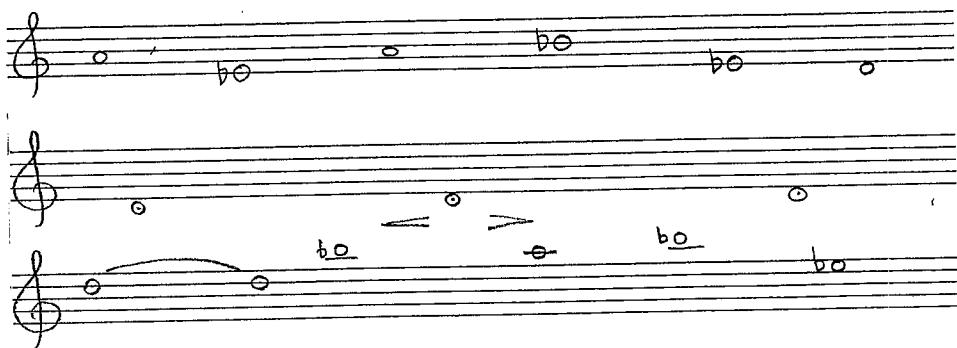
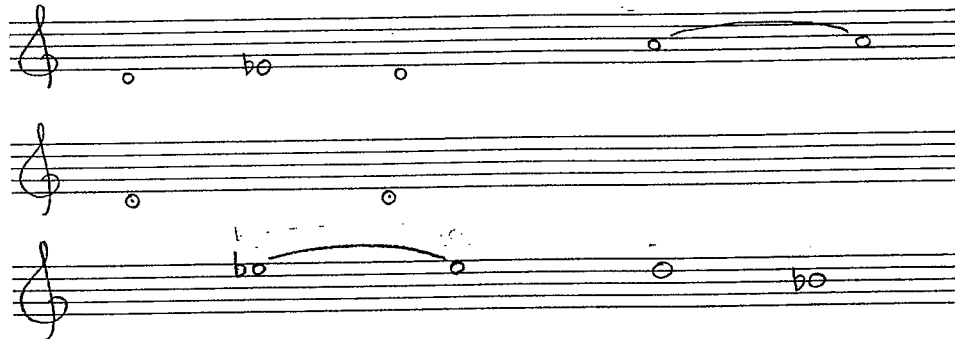
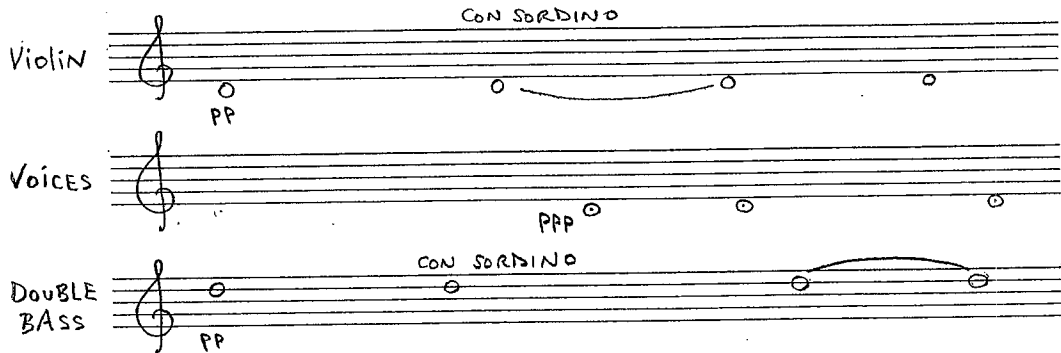
# MISSING

VERY SLOWLY

Violin *CON SORDINO*  
pp

Voices *PPP*

DOUBLE BASS *CON SORDINO*  
pp

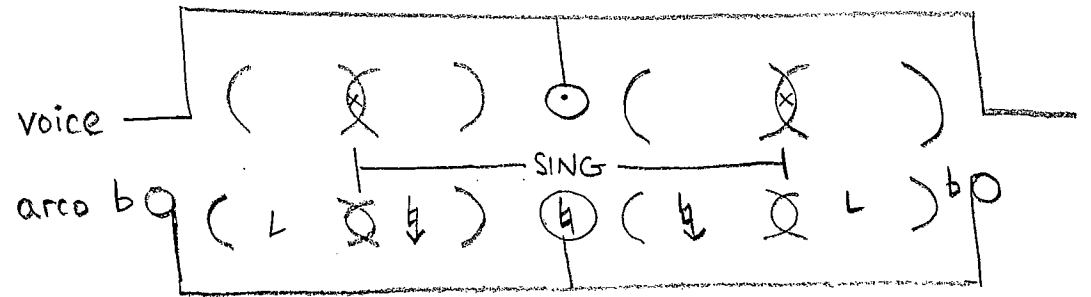
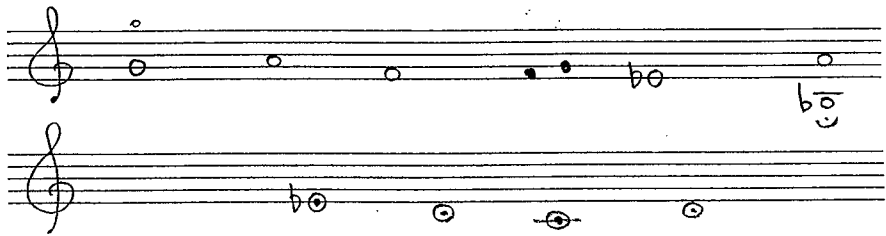
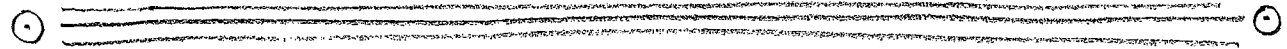
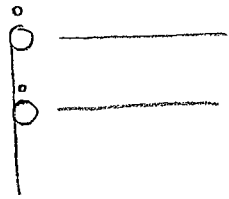
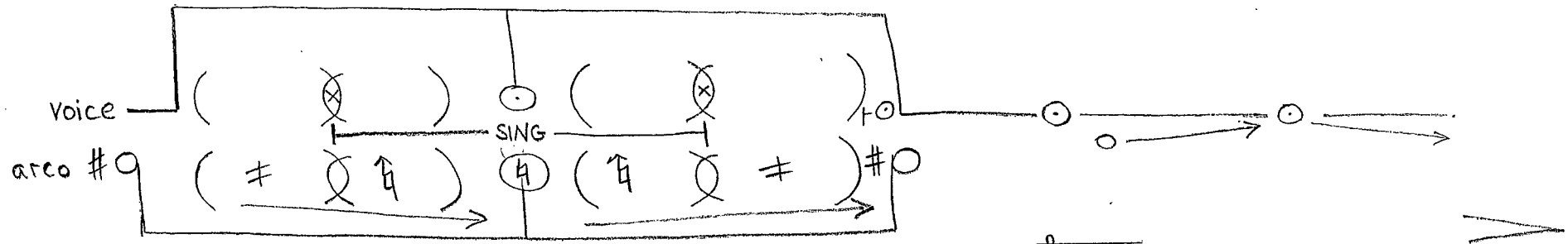


# LAST SCENE ON THE SUSPENSION BRIDGE

The score consists of several parts:

- Top Left:** Three staves (treble, treble, and bass clef) with musical notation.
- Top Right:** An *arco* staff with the instruction "CON SORDINO" and a melodic line.
- Middle:** A *Voice* staff with a melodic line.
- Diagram:** A large curved line representing a pitch contour, with several circled notes: E4, E4, Eb, E4, D4, D4, Db, D4, D4, and C4.
- Bottom Right:** A *Voice* staff and an *arco* staff with the instruction "CON SORDINO" and musical notation.

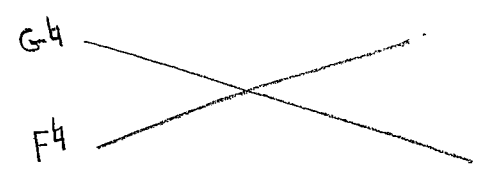
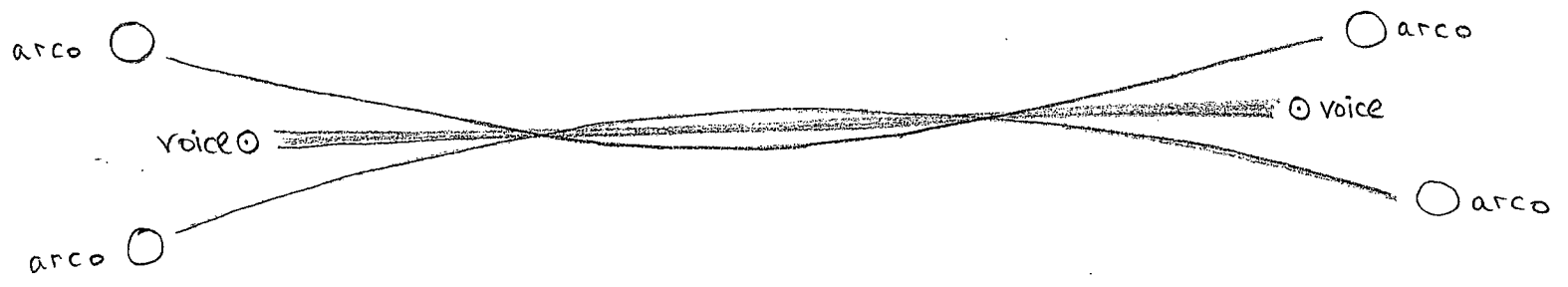
# ACROSS THE VALLEY



# MOVING

# FALLING

# MEETING

# TWO FIGURES EMBRACE

# DISAPPEAR

# WITHOUT TRACE

A handwritten musical score for 'Two Figures Embrace' consisting of 12 staves. The notation includes various notes, rests, and accidentals (flats and naturals) across different clefs. The score is written in a fluid, sketchy style.

A musical diagram for 'Disappear' showing a melodic line with a slur. The notation includes a 'voice' label above the line, 'mp' (mezzo-piano) on the left, and 'arco' below the line. A vertical bar line is present, followed by a dynamic marking 'ppp' (pianissimo) with a wedge-shaped hairpin indicating a decrease in volume.

A musical diagram for 'Without Trace' showing three staves. The top staff has a single note with a flat. The middle staff has a note with a flat, followed by a box containing three notes: (F), (E), and (F), with arrows above them pointing right. The bottom staff has a note with a flat, followed by a box containing a note with a flat, with an arrow above it pointing right.

# A VEHICLE CROSSES

# ENTERS THE MIST

DOUBLE STOP HARMONICS

Violin mp  
double bass

voice

arco

Pizz

mp

Pizz



# SUSPENDED HOVERING

Handwritten musical score for three staves (treble, alto, and bass clefs). The top staff (treble clef) features a long, suspended note on a high pitch. The middle staff (alto clef) shows a melodic line with several notes and ties. The bottom staff (bass clef) shows a lower melodic line with notes and ties.

Violin:

Handwritten musical score for Violin, showing two systems of notes. The first system includes notes with accidentals (sharps and naturals) and 'SING' markings. The second system continues the melodic line with similar notation and accidentals.

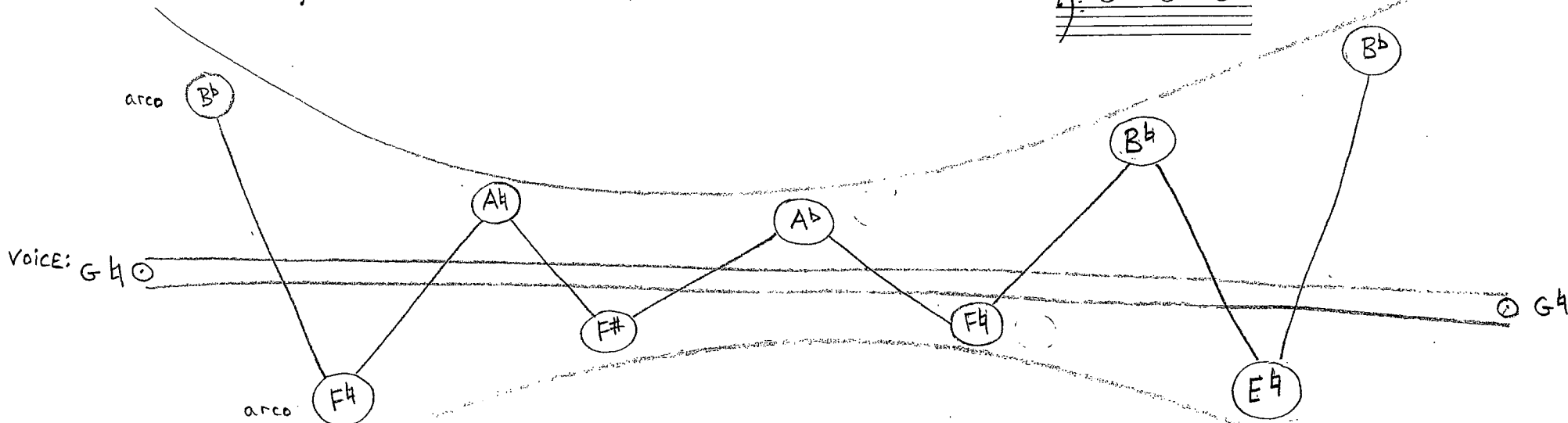
DOUBLE BASS:

Handwritten musical score for Double Bass, showing two systems of notes. The notation includes accidentals and 'SING' markings, mirroring the structure of the Violin part.

# SILOHETTE OF BRIDGE

Handwritten musical notation for the first system, consisting of three staves. The top staff has a treble clef and contains a sequence of notes: a half note G4, a half note A4, a half note B4, a half note C5, and a half note D5. The middle staff has a treble clef and contains a sequence of notes: a half note G4, a half note A4, a half note B4, a half note C5, and a half note D5. The bottom staff has a treble clef and contains a sequence of notes: a half note G4, a half note A4, a half note B4, a half note C5, and a half note D5.

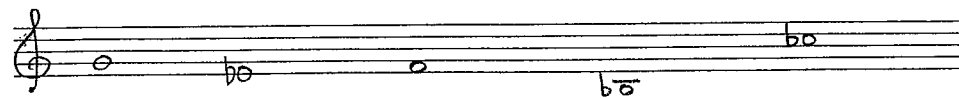
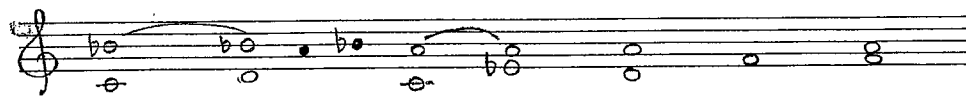
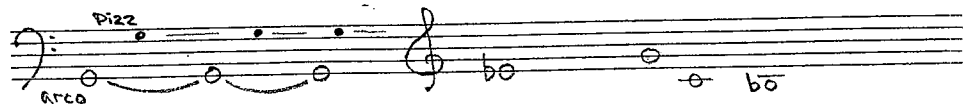
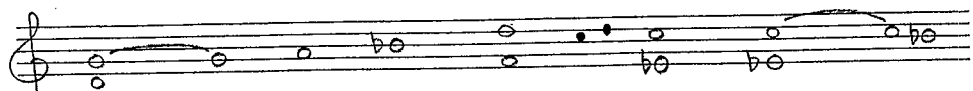
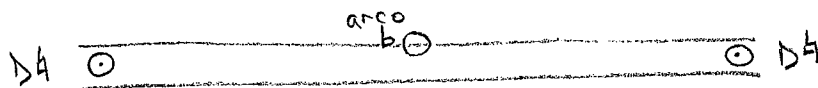
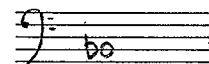
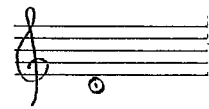
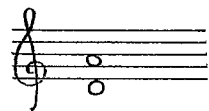
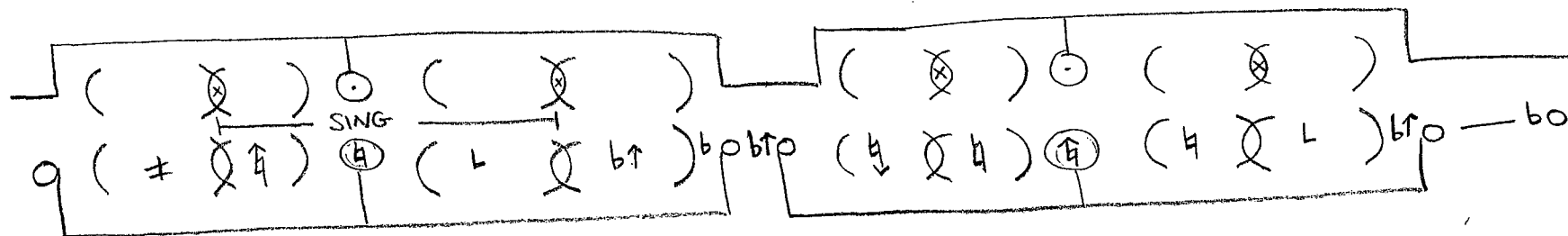
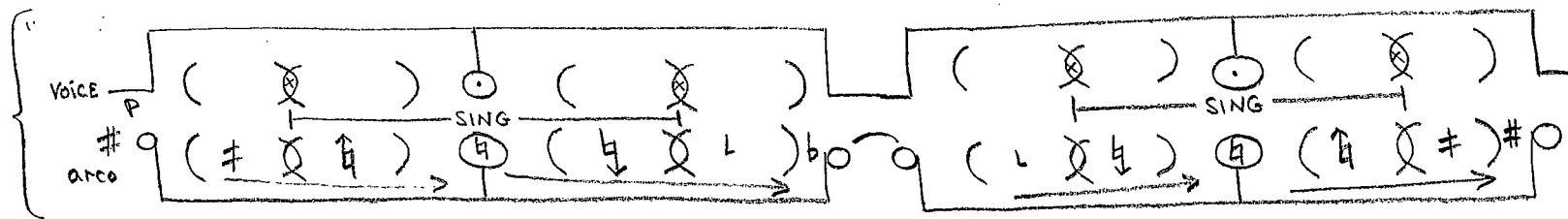
Handwritten musical notation for the second system, consisting of two staves. The top staff has a treble clef and contains a sequence of notes: a half note G4, a half note A4, a half note B4, a half note C5, and a half note D5. The bottom staff has a bass clef and contains a sequence of notes: a half note G2, a half note F2, a half note E2, a half note D2, and a half note C2.



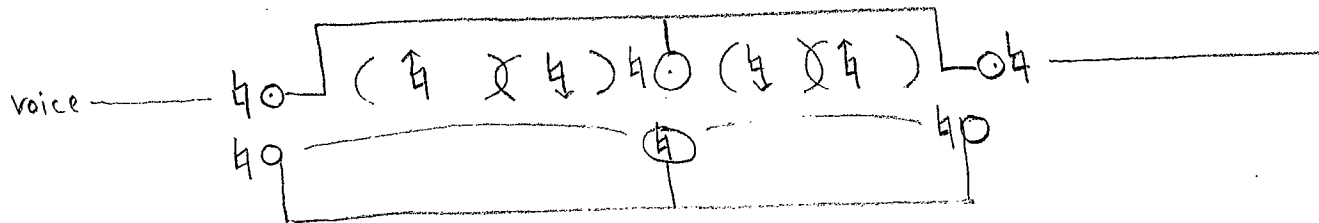
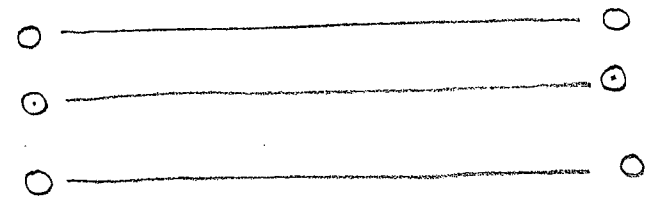
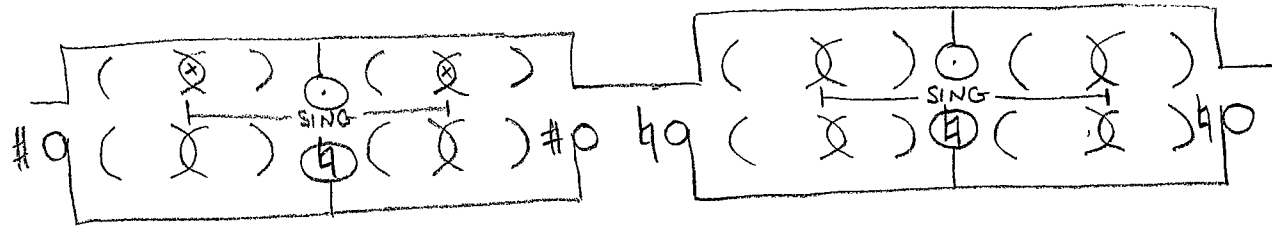
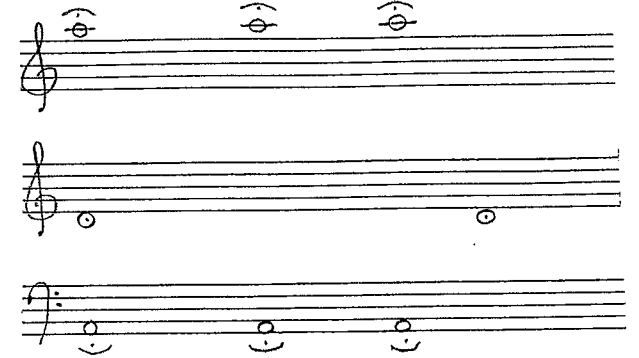
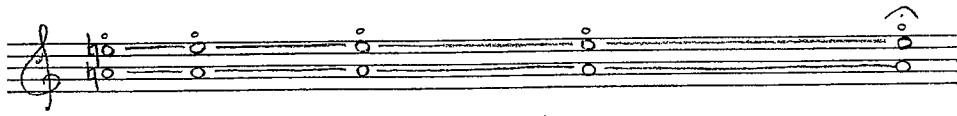
Handwritten musical notation for the third system, consisting of three staves. The top staff has a treble clef and contains a sequence of notes: a half note Bb, a half note C5, a half note D5, a half note E5, and a half note F5. The middle staff has a treble clef and contains a sequence of notes: a half note Bb, a half note C5, a half note D5, a half note E5, and a half note F5. The bottom staff has a bass clef and contains a sequence of notes: a half note G2, a half note F2, a half note E2, a half note D2, and a half note C2. The notes Bb, C5, D5, E5, and F5 are labeled 'arco'. The notes G2, F2, E2, D2, and C2 are labeled 'arco'.

# MISSING

# ALONE



# THE MIST CLEARS



# MISSING

# VEHICLE

Handwritten musical notation for the first system of the 'MISSING' section. It consists of three staves. The top staff has a treble clef and a key signature of one flat (Bb). It contains a melodic line with notes G4, A4, Bb4, C5, D5, E5, F5, G5. There are markings for 'pizz' (pizzicato) and 'arco' (arco) with a bow hair symbol. The middle staff is empty. The bottom staff has a treble clef and a key signature of one flat (Bb), with notes G4, A4, Bb4, C5, D5, E5, F5, G5.

Handwritten musical notation for the second system of the 'MISSING' section. It consists of three staves. The top staff has a treble clef and a key signature of one flat (Bb), with notes G4, A4, Bb4, C5, D5, E5, F5, G5. The middle staff has a treble clef and a key signature of one flat (Bb), with notes G4, A4, Bb4, C5, D5, E5, F5, G5. The bottom staff has a treble clef and a key signature of one flat (Bb), with notes G4, A4, Bb4, C5, D5, E5, F5, G5.

Handwritten musical notation for the first system of the 'VEHICLE' section. It consists of three staves. The top staff has a treble clef and a key signature of one flat (Bb), with notes G4, A4, Bb4, C5, D5, E5, F5, G5. The middle staff has a treble clef and a key signature of one flat (Bb), with notes G4, A4, Bb4, C5, D5, E5, F5, G5. The bottom staff has a treble clef and a key signature of one flat (Bb), with notes G4, A4, Bb4, C5, D5, E5, F5, G5.

Handwritten musical notation for the second system of the 'VEHICLE' section. It consists of three staves. The top staff has a treble clef and a key signature of one flat (Bb), with notes G4, A4, Bb4, C5, D5, E5, F5, G5. The middle staff has a treble clef and a key signature of one flat (Bb), with notes G4, A4, Bb4, C5, D5, E5, F5, G5. The bottom staff has a treble clef and a key signature of one flat (Bb), with notes G4, A4, Bb4, C5, D5, E5, F5, G5.

Voice high 40

Handwritten musical notation for the 'Voice high 40' section. It consists of a single staff with a treble clef and a key signature of one flat (Bb). The notes are G4, A4, Bb4, C5, D5, E5, F5, G5. There are markings for 'pizz' and 'arco' with a bow hair symbol.

arco low 40

Handwritten musical notation for the 'arco low 40' section. It consists of a single staff with a treble clef and a key signature of one flat (Bb). The notes are G4, A4, Bb4, C5, D5, E5, F5, G5. There are markings for 'pizz' and 'arco' with a bow hair symbol.



# LAST SEEN ON THE SUSPENSION BRIDGE

Handwritten musical notation for the first system, consisting of three staves (treble, middle, and bass clefs) with notes and slurs.

Handwritten musical notation for the second system, consisting of two staves (treble and bass clefs) with notes, accidentals, and slurs.

Arco (G#)

(G#)

Voice G#

(G#)

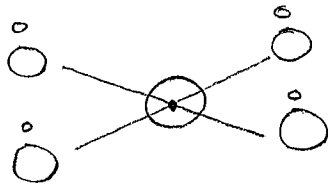
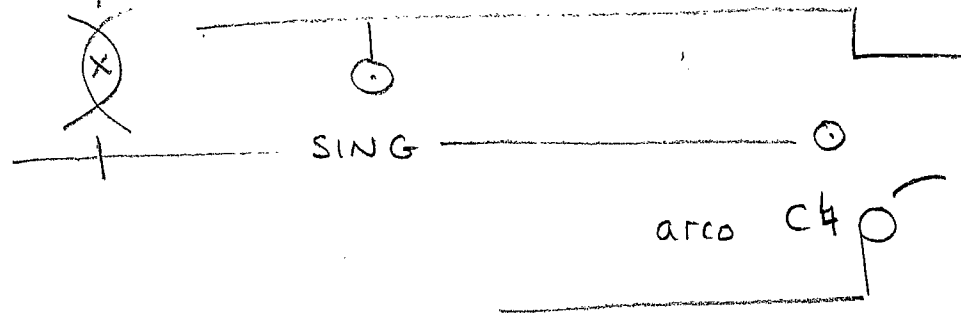
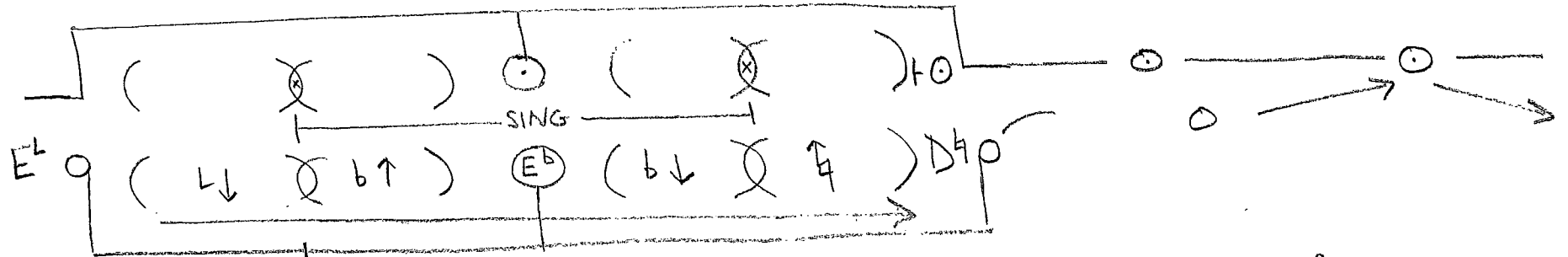
(G#)

(F#)

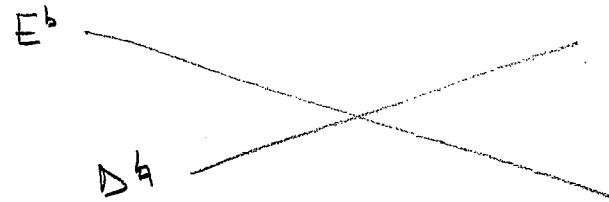
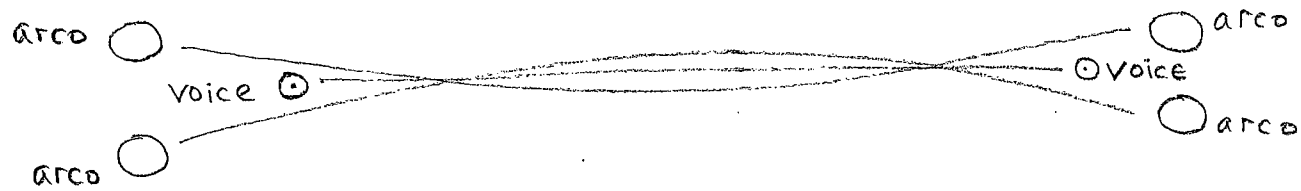
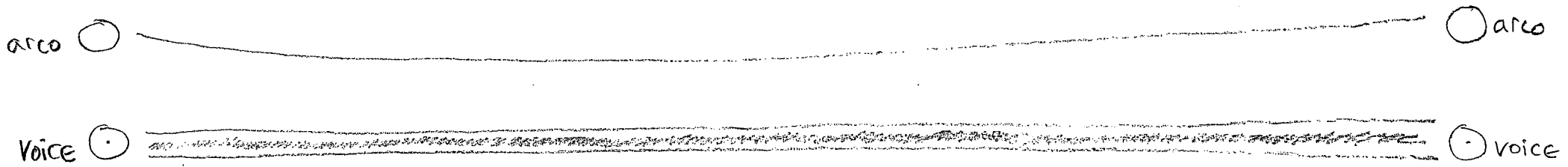
Arco (F#)

Handwritten musical notation for the third system, consisting of two staves (treble and bass clefs) with notes, accidentals, and slurs.

# BETWEEN ONE POINT AND ANOTHER



# TWO FIGURES EMBRACE THE MIST



# THE BRIDGE DISAPPEARS

double stop  
violin

harmonics  
double bass

arco

voice

voice

arco

PP

PPPP